

# SAA Fly-In – Whakatane 10-12<sup>th</sup> February 2024

## Whakatane – NZWK

Elevation 19ft, Unattended 118.6



Whakatane airport is a certified UNCONTROLLED aerodrome, please follow recognized procedures for arrival into an uncontrolled aerodrome. Circuits are over land, Left hand for 27, Right hand for 09. Simultaneous operations on 09/27 Grass and Seal runways are prohibited.

### Aerodrome Notes

NZWK has a very small mandatory broadcast zone and no visual reporting points. Local pilots often call when inbound from Matata to the West, Edgecumbe to the South and Ohiwa Harbour to the East. These are easily identified on aeronautical maps and from the air.

The township of Kawerau is also a common reporting point with very prominent steam discharge from its paper mill, it lies to the South West of Edgecumbe township.

Please be alert to traffic that is transiting the airspace but not landing at NZWK, they commonly fly up the coast and are not required to transmit or monitor the 118.6 airfield frequency.

### Parking

On arrival you will have been directed to a parking location, during the weekend it would be appreciated if you could return to the same location after any fly away activity. The parking plan has tried to maximise the space available given expected aircraft numbers.

If departing, **DO NOT** start your engine while in your parking spot, pull your aircraft out into the clear areas which are oriented East/ West. On return, taxi as close as you can to your parking spot and get assistance if necessary to move your aeroplane back into its parking area.

Air Chathams flies between Auckland and Whakatane, these are in the schedules although not all flights might operate, their aircrew generally broadcast their movements on the local frequency so you will have warning of an approaching flight and you could always loiter and investigate some local feature for a little while to give them time to land and taxi to terminal.

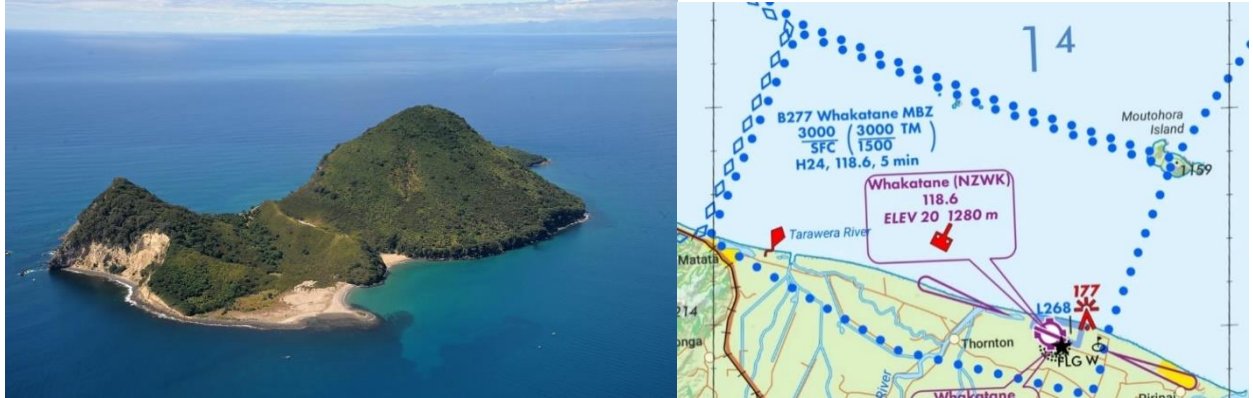
## Places to visit/ fly to

### Whakaari / White Island – The one that erupted...



- Within a mandatory broadcast zone, transmit location, altitude, and intentions on 120.9,
- Volcanic danger zone extends to a 5nm radius and up to 4,500ft.
- Take usual safety precautions for flights over water beyond gliding distance of land.

### Moutohora / Whale Island



- 5nm of the coast to the north of the Whakatane Airport
- It lies on the intersection of the Whakatane MBZ to the south (118.6) and the Whakaari / White Island MBZ to the north (120.9), so also be aware of traffic transiting to and from Whakaari/ White Island.

## Rotorua – NZRO (Certificated 121.2, Controlled)

30nm East South East of Whakatane (220 degrees true). While you would likely want to avoid actually flying to Rotorua, to the East of the controlled airspace between Whakatane and Rotorua is the Rotorua lakes area including Tarawera and Rotomahana and the extinct Mt Tarawera volcanic cone at 3646ft agl. If intending to fly around the area study your charts carefully and make sure you understand the airspace and the MBZ around Mount Tarawera, it's a busy destination for Rotorua based scenic operators.

## Rotorua Lakes (Rotoma, Rotoehu, Rotoiti)

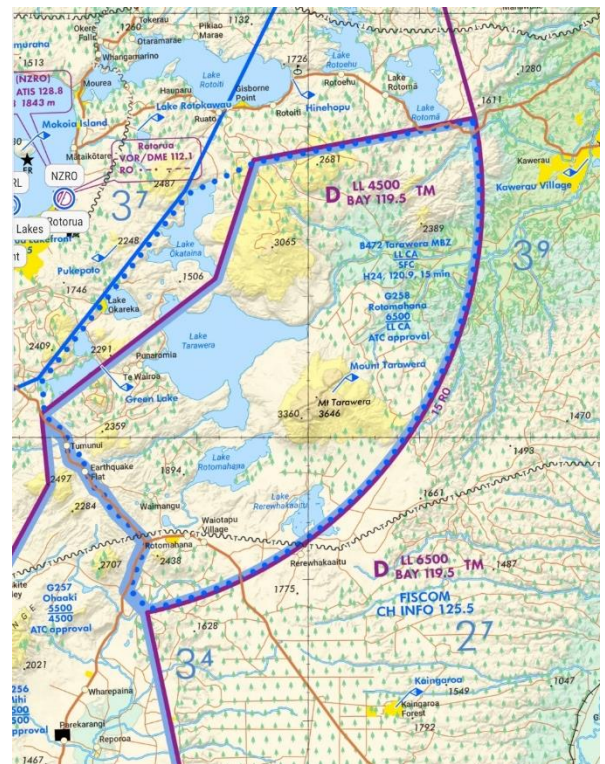


- 20 – 25 nm Southwest of Whakatane, just over the hill from Kawerau.
- Be aware of Rotorua CTA and CTR Airspace restrictions.
- Call Rotorua Tower on 121.2 for clearance to enter their controlled airspace if you wish to venture further into the lakes district.

## Mount Tarawera



- 25 nm south -southwest of Whakatane, or 15nm northwest of Galatea
- Spectacular scenery to fly over!
- There is an MBZ on 120.9 in place around the Mountain.

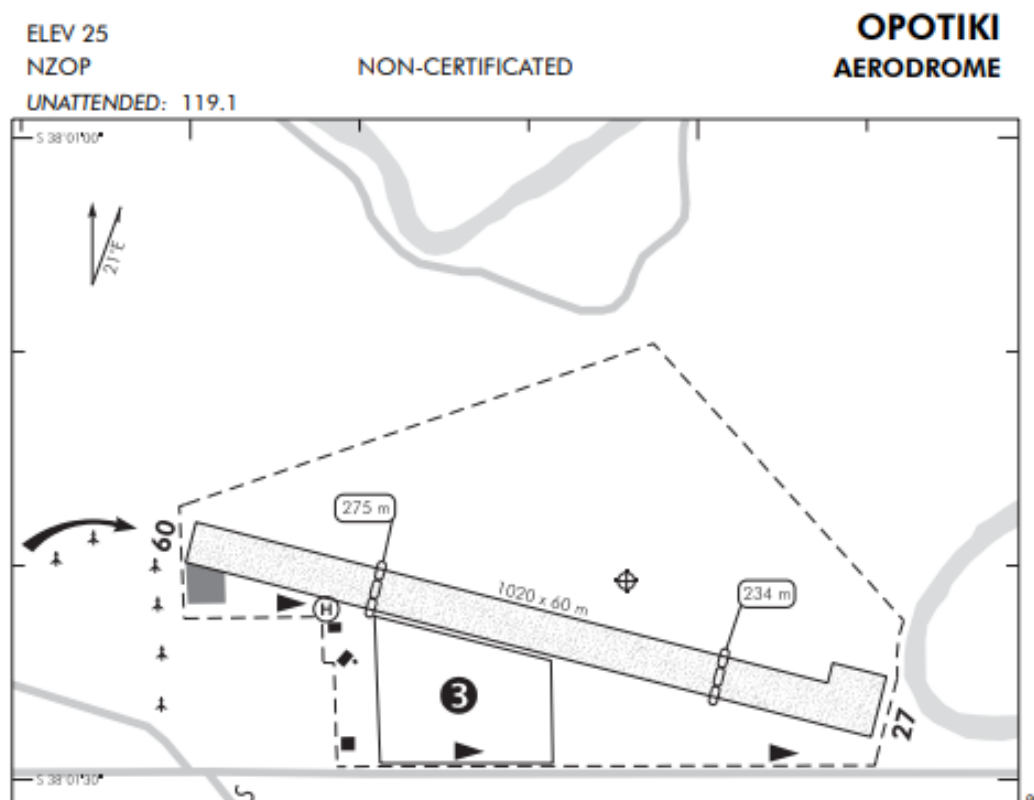


## Ohope / Ohiwa Harbour

- 7 - 10 nm east of Whakatane lies the well-known Ohope Beach holiday destination and the scenic Ohiwa Harbour
- Broadcast on 118.6 when operating in this area, as there is likely to be other aircraft doing the same!



## Opotiki – NZOP (Unattended 119.1)



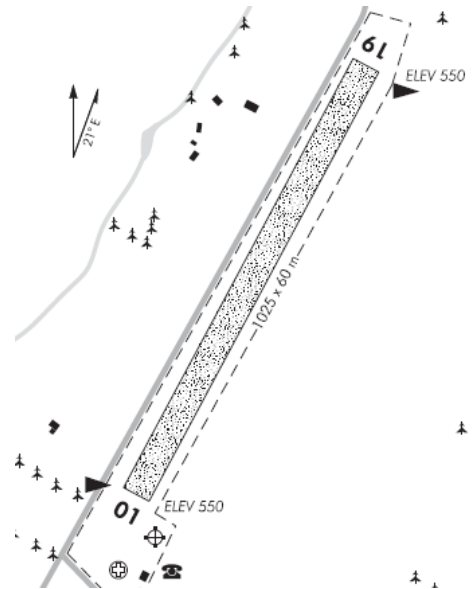
- 20nm east-southeast of Whakatane
- Follow the coast until you get to the new Harbour entrance, turn south. The airfield is to the southeast of the town with a good quality 1000m grass runway and a favourite destination

for casual flights. The local club who will be hosting a BBQ lunch for any flyers who drop in. Bring a little cash to cover costs.

- Note the significant displaced thresholds

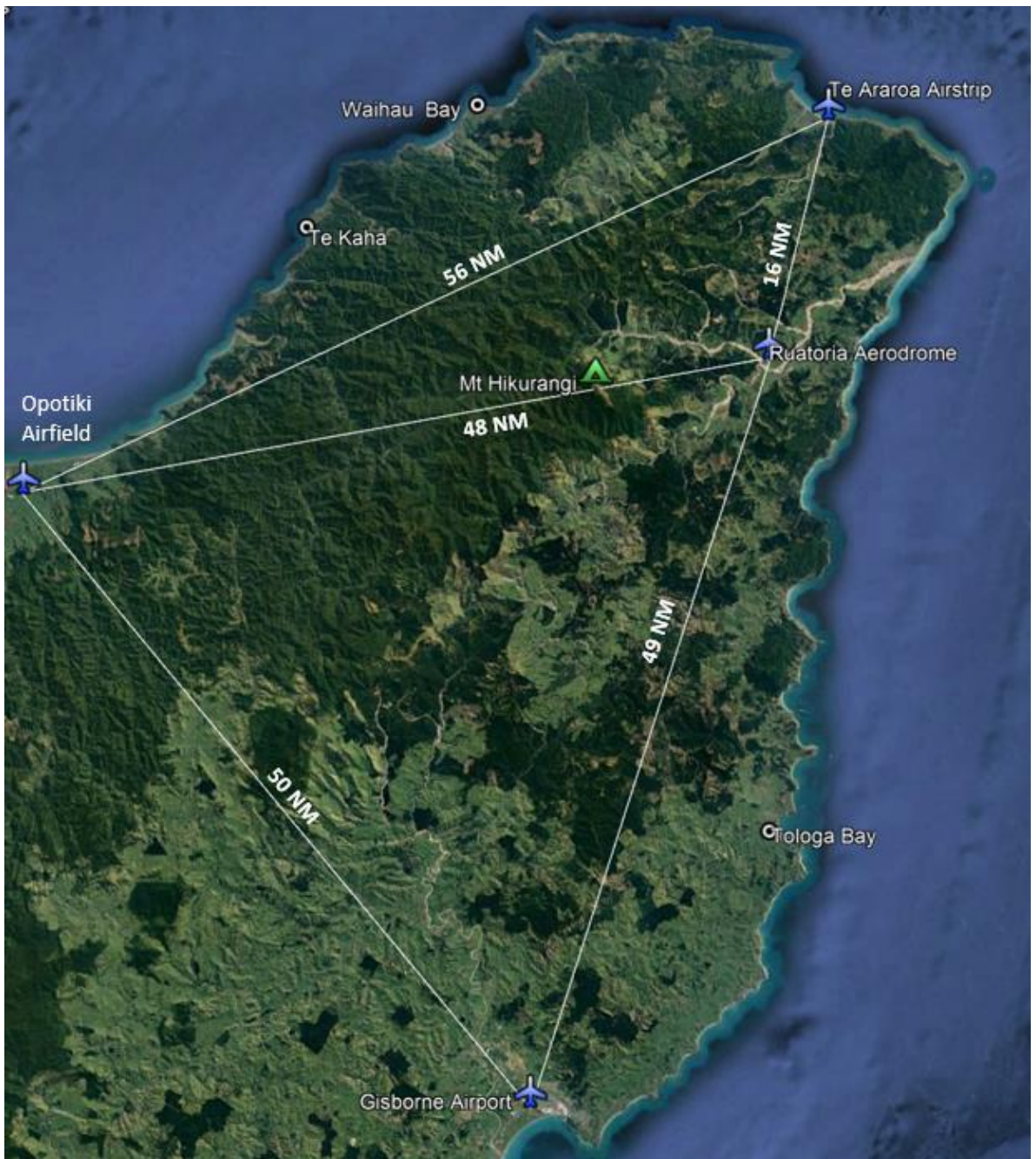
### Galatea – NZGA (Unattended 119.1)

- 30nm South of Whakatane,
- Elevation 550 ft with a freshly mown 1025m grass runway!
- A very friendly microlight and gyrocopter focused local club. Microlights use a 500ft circuit height and along with Gryo's maybe NORDO.
- Fly a little out to the west on your way down to check out the impressive but dormant Mt Tarawera, there is an MBZ over that area to be aware of.
- A direct route from Whakatane will take you over the Matahina dam.



### East Cape, Te Araroa , Ruatoria, Mt Hikurangi

- From Opotiki, follow the coast eastward for 56 NM to Te Araroa. There is a newly opened 750m airstrip which replaces the original, very short Beach Reserve strip.
- If not stopping at Te Araroa, continue south a further 16 NM to Ruatoria Airstrip, where Mahanga Maru, owner and operator of Air Ruatoria can provide a briefing for any who wish to undertake a scenic flight around their maunga tapu or sacred mountain, Mt Hikurangi.
- From Ruatoria return to Opotiki or Whakatane or do the full 170 NM east coast circuit by continuing south to Gisborne, via the famous Ngāti Porou east coast, including Tologa Bay.
- Gisborne will welcome you for a further pit stop and refuel if needed (Avgas only).



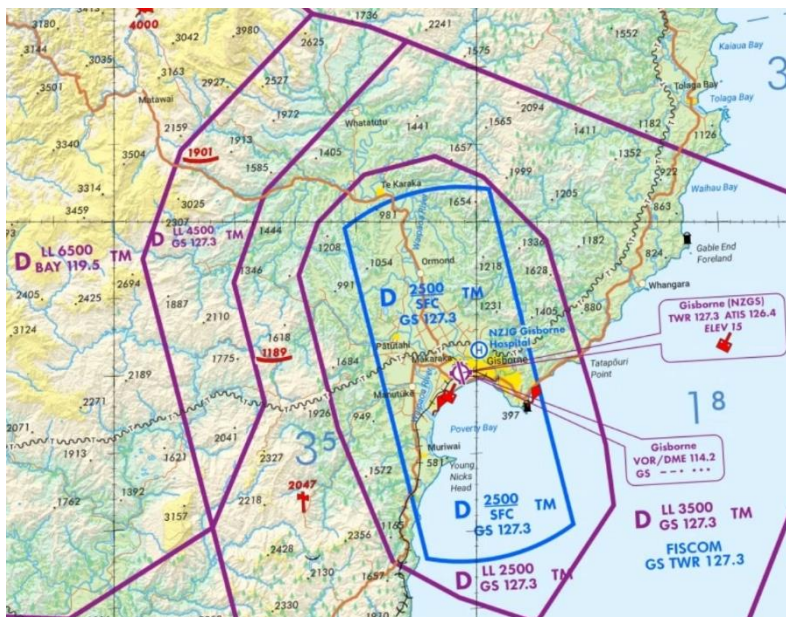
## Ruatoria



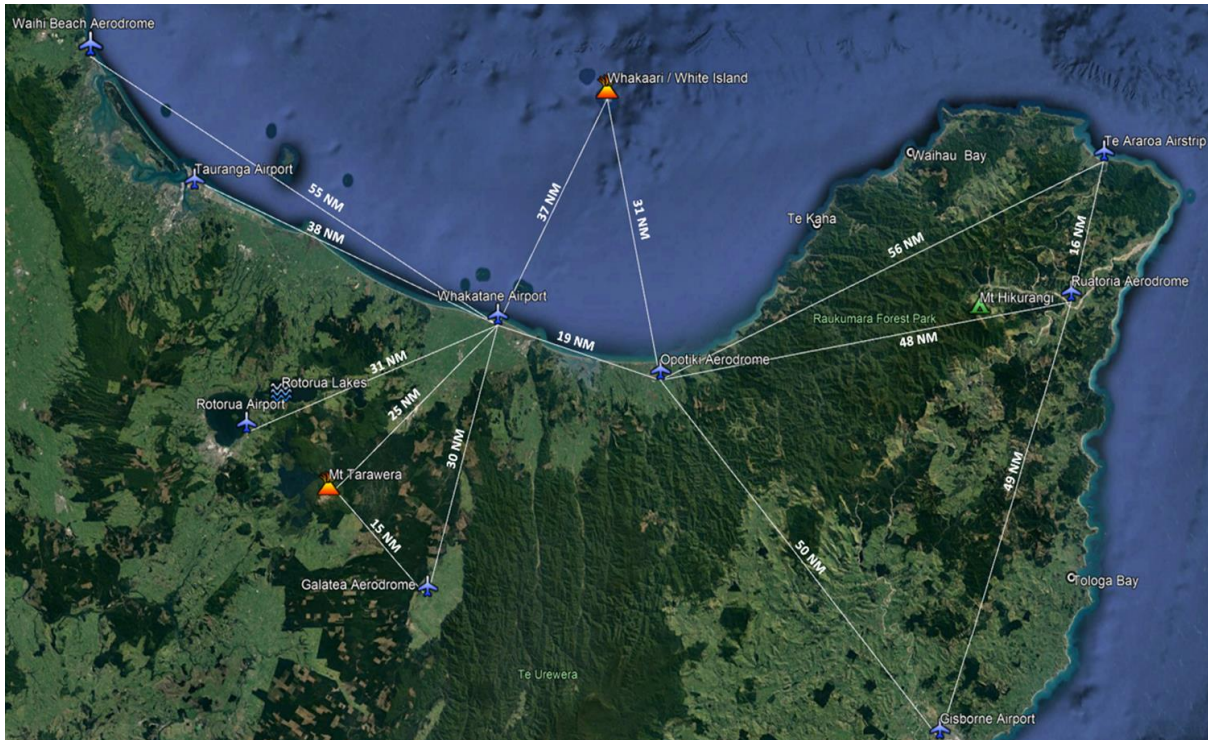
- 900m long grass runway, 31 /13 orientation – has a slight curve in it.
- Located 16 NM due south of Te Araroa and 1.5NM west of Ruatoria Township. The home of Air Ruatoria, run by owner operator and Ngāti Porou local, Mahanga Maru.
- Toilets and refreshments available.
- Mahanga will be available to provide a briefing for those wishing to take a scenic flight around Mt Hikurangi before heading back to Opotiki, or on south to Gisborne

## Gisborne

- Located 50NM southeast of Opotiki, Certificated aerodrome with Tower control.



**Local Area map with approximate distances**



=====

Nothing in this document is intended to override CAA regulations in regard VFR flight and operations in controlled or uncontrolled airspace. The weekend, weather permitting will see a much increased aviation activity in the area and in and out of the Whakatane aerodrome. If everyone follows the rules and adheres to best practice it will be a fun and interesting weekend and everyone will get to go home safe.